

FireAngel®

Product Selector



www.fireangel.co.uk

here to protect you™

We are leading the way in fire safety with state of the art design and technology to deliver the most reliable, efficient and desirable home safety solutions. Our technology is used and trusted by over 90% of the UK's Fire and Rescue Services.

We are Innovation

Our UK based R&D team are committed to innovating quality products to deliver the most efficient home safety solutions.

We are Reliability

Tested and tested again using our in-house test and validation facilities, we pride ourselves on product reliability. There's a reason over 90% of the UK's Fire and Rescue Service choose FireAngel.

We are Service

We have a team of industry professionals and dedicated customer service specialists on hand to provide our customers with market leading support.



CONTENTS

OUR ALARM TECHNOLOGIES

Alarm Technologies 4

MAINS SMOKE AND HEAT ALARMS

FireAngel 10 Year Alarms 5

FireAngel 9V 6-7

BATTERY POWERED ALARMS

10 Year Multi-Sensor and Enhanced Heat Alarms 8

Battery Smoke Alarm 9

Carbon Monoxide Alarms 10-11

WI-SAFE 2 WIRELESSLY CONNECTED PRODUCTS

Wi-Safe 2 Alarms & W2 Wireless Module 12-13

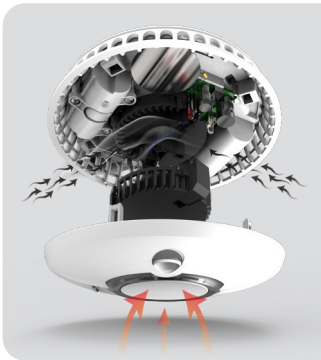
ACCESSORIES

Accessory Products 14-15

REFERENCE INFO

Siting of Alarms 16-19

OUR ALARM TECHNOLOGIES



THERMOPTEK® MULTI-SENSOR

Smoke Sensing Technology

Our unique Thermoptek Multi-Sensor is the smoke alarm technology of choice for UK Fire & Rescue Services and sold throughout Europe.

Optical and heat detection technologies combine to increase the sensitivity of the alarm for a faster response.



THERMISTEK®

Heat Sensing Technology

Class A1 heat detection.

Unique radiant heat dish for a faster response.

Predicts temperature rise and primes alarm to respond sooner.



PACE SENSORS

CO Sensing Technology

Electrochemical technology is an accurate and proven method of sensing carbon monoxide (CO).

FireAngel CO alarms are fitted with long life electrochemical sensors designed to accurately measure low levels of CO. Our patented sensor also protects against leakage - the most common failure of other sensors.

MAINS POWERED

With 10 Year Lithium Battery Back-Up



Mains Powered
With 10 year lithium battery back-up



Sleep Easy
Silence a low battery chirp for 8 hours



Wi-Safe 2
Wireless interlink



5 Year Warranty

SM-F Thermoptek Smoke Alarm



For use in

Equipped with the sensing technology of choice for over 90% of the UK's Fire and Rescue Services, the SM-F offers the ultimate protection against all types of fire.

The Thermoptek Multi-Sensor combines the latest in optical sensing with a thermal enhancement for a rapid detection of both fast flaming and slow smouldering fires in a single alarm.

- Tamper-proof, sealed for life battery provides always-on technology and ultimate property protection
- The only alarm with a proven carbon footprint
- Considerable energy saving characteristics
- Low profile aesthetic design
- Centralised button - test / Smart Silence / locate
- Ultra slim fast-fit base plate
- Secondary back-up buzzer

Hallway, Landing, Living Room, Bedroom, Dining Room

HM-F Thermistek Heat Alarm



For use in

This Class A1 mains heat alarm features Thermistek technology with a unique radiant heat dish, which reflects directional heat from the fire onto the thermistor for a faster response.

The alarm also predicts temperature rise and primes the alarm to respond sooner if the temperature is predicted to be rising at a dangerous rate.

- Tamper-proof sealed for life battery provides always on technology
- Considerable energy saving characteristics
- Low profile aesthetic design
- Centralised button - test / Smart Silence / locate
- Ultra slim fast-fit base plate
- Secondary back-up buzzer

Kitchen, Garage, Loft

MAINS 9V BATTERY BACK-UP

Smoke, Heat and Carbon Monoxide Alarms



Mains Powered
With 9V battery
back-up



Push-Fit base
For easy installation



Modern Look



Wireless Interlink
With RF base



5 Year
Warranty

SW1 Optical Smoke Alarm



For use in

- Mains powered with 9V battery back-up
- Enhanced optical technology reduces nuisance alarms
- Hard-wired or wireless interlink with the RF-BW-T base
- Hardwire interlink up to 12 units of SW1 / HW1 / CW1
- Wireless interlink up to 50 units of SW1 / HW1 / CW1 with help of RF-BW
- Certified to EN 14604:2005+AC:2008

Hallway, Landing, Living Room, Bedroom, Dining Room

HW1 Heat Alarm



For use in

- Mains powered with 9V battery back-up
- Advanced thermistor sensing technology
- Class A2 heat detection 54°C - 70°C
- Hard-wired or wireless interlink with the RF-BW-T base
- Hardwire interlink up to 12 units of SW1 / HW1 / CW1
- Wireless interlink up to 50 units of SW1 / HW1 / CW1 with help of RF-BW
- Certified to BS 5446-2: 2003

Kitchen, Garage, Loft

CW1-PF Carbon Monoxide Alarm



The CW1 is easy to install with a Push2Fit base for a secure and speedy connection of the alarm to the base unit. Saving you time and money on installations.

- Mains Powered with 9V battery back-up
- Enhanced electrochemical sensor
- Hard-wired or wireless interlink with the RF-BW base
- Hardwire interlink up to 12 units of SW1 / HW1 / CW1
- Wireless interlink up to 50 units of SW1 / HW1 / CW1 with help of RF-BW
- 5 year warranty
- Certified to BS EN 50291-1: 2010

RF-BW RF Interlink Base

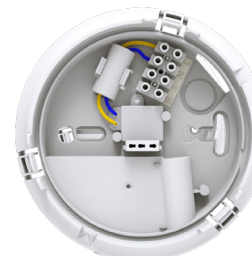


Wirelessly interlink up to 50 SW1 smoke alarms, HW1 heat alarms and CW1-PF carbon monoxide alarms using the RF-BW interlink base. It's quick to install and quick to link, ensuring greater output and savings.

The base unit has been designed to transmit an RF signal when the mounted alarm senses smoke or fire. When another RF-BW base receives this signal the attached smoke or heat alarm will also sound, eliminating the need for connection wires between each alarm. Ideal when refurbishing or extending an existing property as there is no messy chasing or trunking to worry about.

- Wirelessly interlink up to 50 SW1 smoke, HW1 heat and CW1 CO alarms
- Quick to install and quick to link

BW-PF Push2Fit Base



Add a Push2Fit base to ensure a secure and speedy connection of the alarm to the base unit. Saving you time and money on installations.

- Quick to install

- 1: Screw the mounting base firmly to the ceiling
- 2: Connect the mains wires to the terminal block
- 3: Align arrows and Push2Fit the alarm securely onto the base

BATTERY ALARMS

REPLACEABLE BATTERY ALARMS

10 Year Sealed Battery-Powered Smoke and Heat Alarms

Replaceable Battery-Powered Smoke Alarms



10 Year
Sealed for life lithium
battery



Easy to Install
With automatic battery
engagement on base plate



5 Year
Warranty



Replaceable
Battery



5 Year
Warranty

ST-622 Multi-Sensor Smoke Alarm



For use in

Equipped with the sensing technology of choice for over 90% of the UK's Fire and Rescue Services, the ST-622 offers the ultimate protection against all types of fire.

The Thermoptek Multi-Sensor combines the latest in optical sensing with a thermal enhancement for a rapid detection of both fast flaming and slow smouldering fires in a single alarm.

- Multi-sensor smoke alarm
- 10 year sealed for life lithium battery
- Faster reaction to all types of fire
- Reduces false alarms
- Trusted technology used by the UK's Fire and Rescue Service
- Certified to EN 14604:2005+AC:2008

Hallway, Landing, Living Room, Bedroom, Dining Room

SB5 Optical Smoke Alarm



For use in

Optical sensors reduce nuisance alarms from cooking fumes and are recommended for installation in circulation areas such as hallways and landings.

- High performance optical sensor reduces nuisance alarms
- 9V replaceable battery included
- Ideal for installations where cost is a priority
- Certified to EN 14604:2005+AC:2008

Hallway, Landing, Living Room, Bedroom, Dining Room

HT-630 Enhanced Heat Alarm



For use in

This battery powered heat alarm features Thermistek technology with a unique radiant heat dish, which reflects directional heat from the fire onto the thermistor for a faster response.

The alarm also predicts temperature rise and primes the alarm to respond sooner if the temperature is predicted to be rising at a dangerous rate.

- Thermistek technology provides a quicker response to fast flaming fires
- Trusted technology used by the UK's Fire and Rescue Service
- Smart Silence - temporarily silence known false alarms
- Certified to BS 5446-2:2003

Kitchen, Garage, Loft

ST-625 Multi-Sensor Smoke Alarm



For use in

Equipped with the sensing technology of choice for over 90% of the UK's Fire and Rescue Services, the ST-625 offers the ultimate protection against all types of fire.

The Thermoptek Multi-Sensor combines the latest in optical sensing with a thermal enhancement for a rapid detection of both fast flaming and slow smouldering fires in a single alarm.

- Multi-sensor smoke alarm
- 2 x AA replaceable batteries included
- Faster reaction to all types of fire
- Reduces false alarms
- Trusted technology used by the UK's Fire and Rescue Service
- Certified to EN 14604:2005+AC:2008

Hallway, Landing, Living Room, Bedroom, Dining Room

BATTERY CO ALARMS

Carbon Monoxide Alarms



Sealed For Life Batteries



Advanced Electrochemical Sensor

CO-9X-10

10 Year Battery Powered Carbon Monoxide Alarm



The FireAngel CO-9X-10 is a 10 year sealed battery carbon monoxide detector with three LED status indicators to show when the unit has power, or has entered into a fault or alarm mode.

The detector is designed so that it can be wall mounted or left free standing.

- LED display
- Fast-Fit bracket for quick installation
- Unique diagnostic capability
- 10 year sealed battery
- 10 year warranty
- Certified to BS EN 50291-1:2010+A1:2012
BS EN 50291-2:2010



For domestic premises (caravan holiday homes), caravans, motor caravans and boats.

BATTERY CO ALARMS

Carbon Monoxide Alarms

CO-9X

7 Year Battery Powered Carbon Monoxide Alarm



The CO-9X is battery powered carbon monoxide alarm that provides an early warning of the presence of CO in a home. Features three LED status indicators to show when the unit has power, or has entered into a fault or alarm mode.

- Designed so that it can be wall mounted or left free-standing
- Fast-Fit bracket for quick installation
- Unique diagnostic capability to provide a report giving the time, date and level of CO in the property
- 7 year sealed battery
- 7 year warranty
- Certified to BS EN 50291-1:2010+A1:2012
BS EN 50291-2:2010



For domestic premises (caravan holiday homes), caravans, motor caravans and boats.

CO-9D

7 Year Battery Powered Digital Carbon Monoxide Alarm



The FireAngel CO-9D digital, 7 year life carbon monoxide alarm provides an early warning of the presence of CO in your home.

The digital LCD display shows low levels of CO down to 10ppm and also peak readings over the previous 4 weeks.

- Unique digital display
- Shows peak levels of CO detected over a 4 week period
- Displays CO levels as low as 10ppm
- 7 year sealed battery
- 7 year warranty
- Certified to BS EN 50291-1:2010+A1:2012
BS EN 50291-2:2010



For domestic premises (caravan holiday homes), caravans and motor caravans.

CO-9B

Replaceable Battery Powered Carbon Monoxide Alarm



The CO-9B has a 7 year lifespan and manufacturer's warranty period, and is supplied with 2 x AA batteries to power the alarm.

- LED display
- Free-standing or wall mounted
- Supplied with 1 year replaceable AA alkaline batteries
- 7 year warranty
- Certified to BS EN 50291-1:2010+A1:2012
BS EN 50291-2:2010



For domestic premises (caravan holiday homes), caravans and motor caravans.

WI-SAFE 2

Wirelessly Connected Products

Wi-Safe 2 simplifies installation with a simple two button connection process. No wiring, mess or fuss.



10 Year
Sealed for life lithium battery



Wi-Safe 2
Wireless interlink



5 Year
Warranty

W2 Module

Smart Wireless Module



Wi-Safe 2 wireless modules provide a wireless connection between any Wi-Safe 2 enabled alarm.

ST-630

Multi-Sensor Smoke Alarm with W2 Module



For use in

Equipped with the sensing technology of choice for over 90% of the UK's Fire and Rescue Services, the ST-630 offers the ultimate protection against all types of fire.

The Thermoptek Multi-Sensor combines the latest in optical sensing with a thermal enhancement for a rapid detection of both fast flaming and slow smouldering fires in a single alarm.

- Multi-sensor smoke alarm
- 10 year sealed for life lithium battery
- Faster reaction to all types of fire
- Reduces false alarms
- Silence and locate feature
- Wi-Safe 2 compatible
- Certified to EN 14604:2005+AC:2008

Hallway, Landing, Living Room, Bedroom, Dining Room

HT-630

Enhanced Heat Alarm with W2 Module



For use in

This battery powered heat alarm features Thermistek technology with a unique radiant heat dish, which reflects directional heat from the fire onto the thermistor for a faster response. The alarm also predicts temperature rise and primes the alarm to respond sooner if the temperature is predicted to be rising at a dangerous rate.

- Thermistek technology provides a quicker response to fast flaming fires
- Trusted technology used by the UK's Fire and Rescue Service
- Wi-Safe 2 compatible
- Certified to BS 5446-2: 2003

Kitchen, Garage, Loft

SM-F

Thermoptek Smoke Alarm with W2 Module



For use in

Equipped with the sensing technology of choice for over 90% of the UK's Fire and Rescue Services, the SM-F offers the ultimate protection against all types of fire.

The Thermoptek Multi-Sensor combines the latest in optical sensing with a thermal enhancement for a rapid detection of both fast flaming and slow smouldering fires in a single alarm.

- Tamper-proof, sealed for life battery provides always-on technology and ultimate property protection
- The only alarm with a proven carbon footprint
- Considerable energy saving characteristics
- Low profile aesthetic design
- Centralised button - test / Smart Silence / locate
- Ultra slim fast-fit base plate
- Secondary back-up buzzer
- Wi-Safe 2 compatible

Hallway, Landing, Living Room, Bedroom, Dining Room

HM-F

Thermistek Heat Alarm with W2 Module



For use in

This Class A1 mains heat alarm features Thermistek technology with a unique radiant heat dish, which reflects directional heat from the fire onto the thermistor for a faster response.

The alarm also predicts temperature rise and primes the alarm to respond sooner if the temperature is predicted to be rising at a dangerous rate.

- Tamper-proof sealed for life battery provides always on technology
- Considerable energy saving characteristics
- Low profile aesthetic design
- Centralised button - test / Smart Silence / locate
- Ultra slim fast-fit base plate
- Secondary back-up buzzer
- Wi-Safe 2 compatible

Kitchen, Garage, Loft

NM-CO-10X

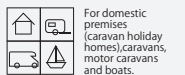
Wireless Interlink Carbon Monoxide Alarm



The NM-CO-10X is a 10 year battery powered, sealed for life carbon monoxide alarm.

Adding a W2 module provides an intelligent wireless interlink with up to 50 other Wi-Safe 2 enabled devices. Meaning any danger is reported by every alarm throughout the property to enable a faster response.

- Wi-Safe 2 compatible
- Unique diagnostic capability
- Single or double point fixing options
- 5 year warranty
- Certified to BS EN 50291-1:2010+A1:2012
BS EN 50291-2:2010



For domestic premises (caravan holiday homes), caravans, motor caravans and boats.

ACCESSORIES

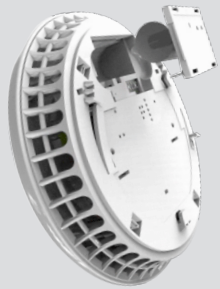
Expand Your Network

WTSL Wireless Alarm Control



The easiest way to test, silence and locate Wi-Safe 2 enabled wireless alarms.

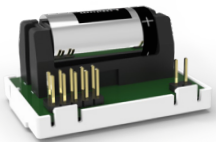
- **Replaceable battery**
- **Works with any Wi-Safe 2 enabled alarm**
- **Smoke, heat and CO alarm identification**
- **Mixed system compatibility with wireless and hard-wired alarms**
- **5 year warranty**



ZWAVE zigbee Smart Home Modules

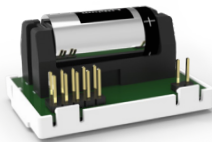
Add to your network of connected devices by adding a Z-Wave or Zigbee wireless module to compatible alarms such as the ST-630, HT-630 or NM-CO-10X. The modules enable a smoke, heat or carbon monoxide (CO) alarm to wirelessly connect to a third party Z-Wave or Zigbee Controller.

Z-Wave Module Smart Wireless Module



ZWAVE wireless modules provide a wireless connection between your FireAngel alarm and third party Z-Wave controller.

Zigbee Module Smart Wireless Module



zigbee wireless modules provide a wireless connection between your FireAngel alarm and third party Zigbee controller.

RLYM-1EU

Mains powered Relay with 10 year battery back-up

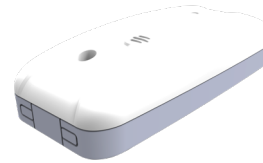


To connect smoke, heat and CO alarms to other external devices in a single network.

- **RLYM-1 mains version provides hard-wire interconnect only**
- **Can differentiate between smoke/heat & CO signals and can activate relay outputs independently from each other**
- **2 x NO/NC output relay contacts can be triggered by 230V alarms**
- **Both relay outputs rated up to 250V AC-5A / 30VDC**
- **Output signals either pulsed or continuous via dip switch**
- **Links with Telecare**
- **1 x input contact 12-24V DC**
- **Low battery / end of life buzzer**
- **Both relay contacts will fail safe**
- **Test button for relay testing**
- **5 year warranty**

WRLYM-1EU

Mains powered Relay with Wireless Interlink



To connect smoke, heat and CO alarms to other external devices in a single network.

- **WRLYM-1 mains version with wireless interlink only**
- **2 x NO/NC output relay contacts can be triggered by 230V alarms**
- **Both relay outputs rated up to 250V AC-5A / 30VDC**
- **Output signals either pulsed or continuous via dip switch**
- **Links with Telecare**
- **1 x input contact 12-24V DC**
- **Can be powered by 12V external adaptor (not supplied)**
- **Low battery / end of life buzzer**
- **Both relay contacts will fail safe**
- **Test button for relay testing**
- **Wi-Safe 2 compatible**
- **5 year warranty**

FS1552W2-T

Combined Strobe and Vibrating Pad



The FS1552W2-T provides additional protection for those with hearing loss, who may not hear the sound of an alarm.

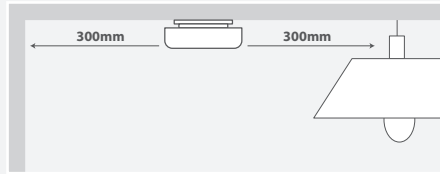
- **Compatible with and activated by any Smart RF wireless smoke, heat or CO alarm**
- **The flashing strobe provides a visual warning, while the vibrating pad can be placed under a pillow or mattress during sleep**
- **The flashing strobe can be used independently from the pillow pad**
- **Flexibility in positioning: wall-mounted or free-standing**
- **Enables low level testing of all interlinked products in the network, avoiding the need to reach up to ceiling mounted alarms to test**
- **Certified to BS5446-3:2005**

REFERENCE INFO

Siting of Smoke Alarms*

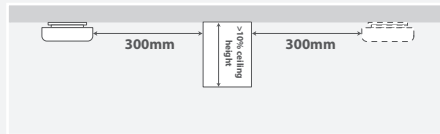
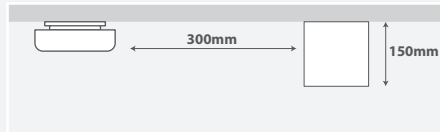
Flat ceiling

- Site at least 300mm from walls
- Site at least 300mm from any light fittings
- Site as centrally as possible



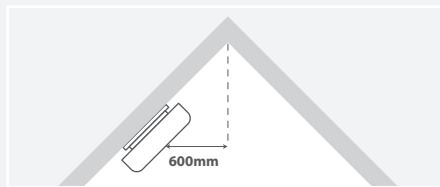
Flat ceilings with beams

- Site at least twice the depth of the beam away e.g. 150mm beam depth: site the alarm at least 300mm away from the beam
- If depth of beam is greater than 10% of the ceiling height, the beam should be treated as a wall (alarms need to be on either side of the beam)



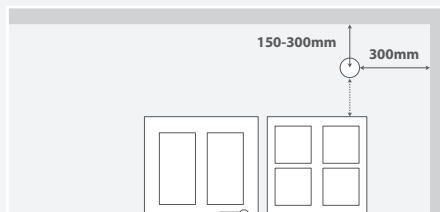
Pitched roof

- Site at no more than 600mm horizontally from apex



Wall mounted

- The top of the detection element is between 150mm and 300mm below the ceiling
- Site at least 300mm from a perpendicular wall

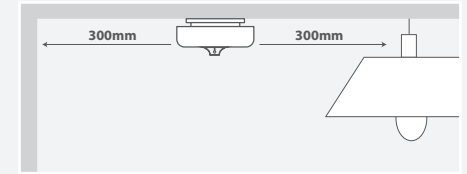


REFERENCE INFO

Siting of Heat Alarms*

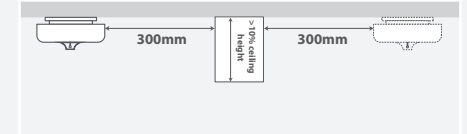
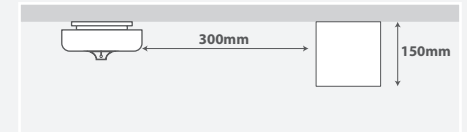
Flat ceiling

- Site at least 300mm from walls
- Site at least 300mm from any light fittings
- Site as centrally as possible



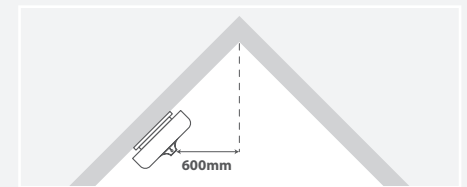
Flat ceilings with beams

- Site at least twice the depth of the beam away e.g. 150mm beam depth: site the alarm at least 300mm away from the beam
- It is important that heat alarms are installed in the centre of the room with attention that they are not located too close to stoves and cookers
- If depth of beam is greater than 10% of the ceiling height, the beam should be treated as a wall (alarms need to be on either side of the beam)



Pitched roof

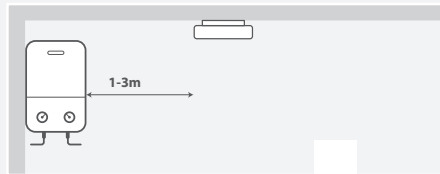
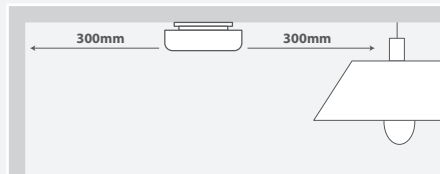
- Site at no more than 600mm horizontally from apex



When installing a CO alarm in a room where there is an appliance fitted

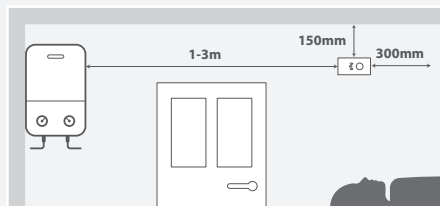
Ceiling mounted

- Site at least 300mm from walls
- Site at least 300mm from any light fittings
- Site between 1 to 3 metres from the fuel-burning appliance
- If the room has a partition, site the alarm on the side the appliance is situated in



Wall mounted in a bedroom

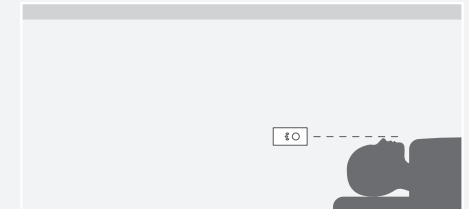
- Site close to the ceiling but at least 150mm down.
- Site at least 300mm from a perpendicular wall
- Site between 1 to 3 metres from the fuel-burning appliance



When installing a CO alarm in a room where there is no appliance fitted

Wall mounted

- Site at the breathing height of the occupants (bed height)
- Site at the breathing height of the occupants (seated height)





fireangel.co.uk